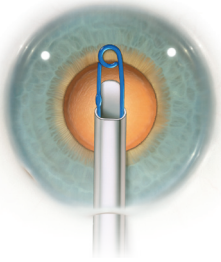


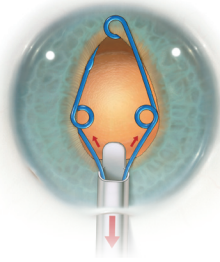


Malyugin Ring 2.0

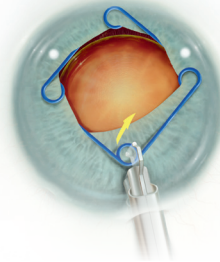
Ring Placement



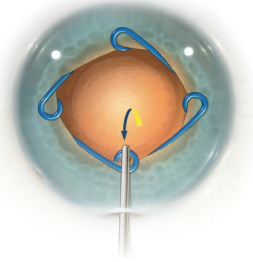
With viscoelastic in the anterior chamber, inject the ring starting with the cannula end at the mid-pupil.



Inject while simultaneously retracting the injector. Pointing the distal tip of the injector down eases placement of the lateral scrolls.

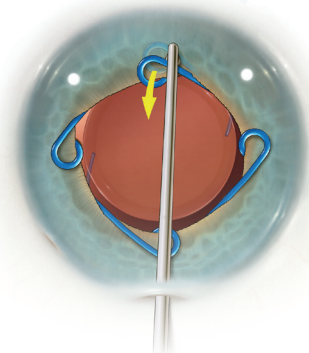


To disengage, lift before placing the proximal scroll on the iris.

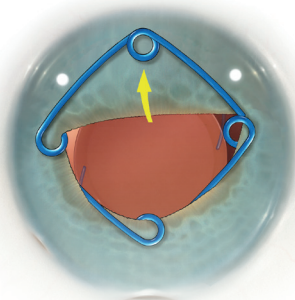


Use the Osher/ Malyugin Manipulator to place the proximal scroll.

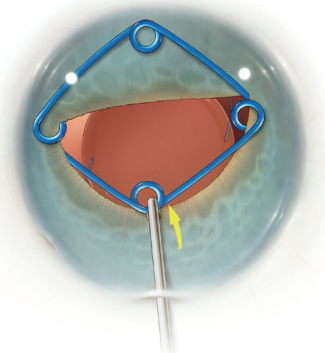
Ring Removal



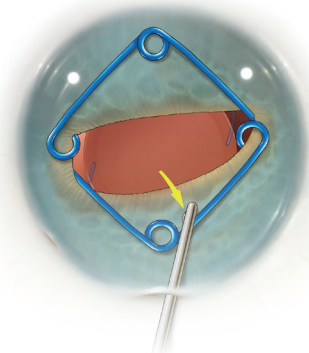
Use the Osher/Malyugin Manipulator to disengage the distal scroll.



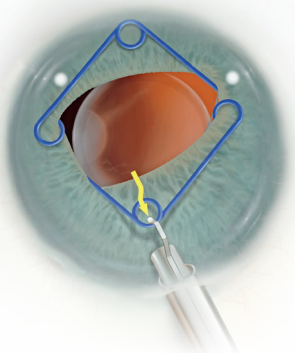
Place the distal scroll on the anterior iris.



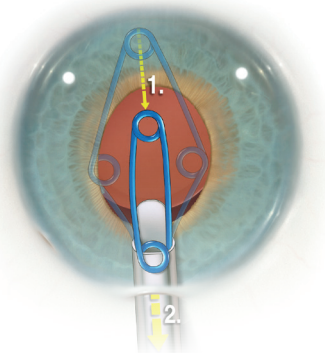
Move the proximal scroll toward the center of the pupil and a bit anterior to disengage.



Place the proximal scroll onto the anterior iris.



Enter the proximal scroll, and pull by moving the button back.



Stop when the lateral scrolls meet at the cannula, then remove the assembly.



Learn More About Malyugin Ring 2.0 Today!

1-888-279-3323 | info@microsurgical.com

bit.ly/MSTfacebook @MST_eye

www.microsurgical.com



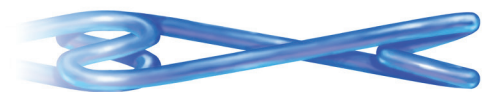
Malyugin Ring 2.0

The Malyugin Ring 2.0 is made with smaller material and provides these additional benefits:

Increased space in the scroll gap. The Malyugin Ring 2.0 features more space between the anterior and posterior scrolls, providing easier engagement and disengagement from the iris.

More flexible. The Malyugin Ring 2.0 requires less than half as much force to compress the ring scroll to scroll than the classic version. This translates to greater flexibility and an even gentler expansion of the iris.

Small incision access. The Malyugin Ring 2.0 injector allows for entry into 2.0mm incisions and provides more room to work in wounds larger than that.



Malyugin Ring Classic

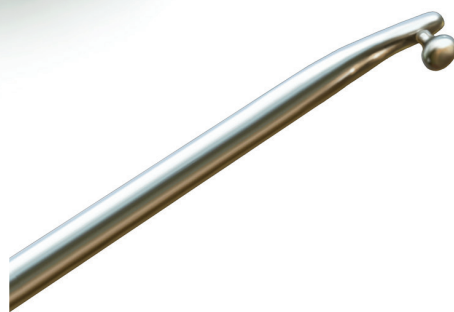
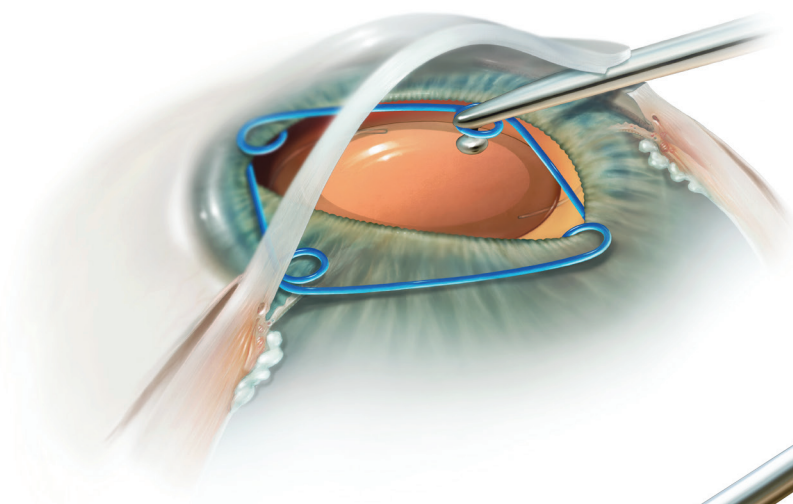


Malyugin Ring 2.0



The Osher Modification to the Injector

In 2014, Robert Osher, M.D. helped us continue the innovation of the Malyugin Ring by creating an injector that allowed for easier release and re-engagement of the ring. We are now thrilled to provide you with the Osher Modification to the Malyugin Ring Injector.



The Osher/Malyugin Manipulator

With a design from Robert Osher, M.D., the Osher/Malyugin Manipulator was created to fit the specific dimensions and tolerances of the ring. The device fits inside the scrolls of the Malyugin Ring to allow for complete control when placing the ring or removing it from the iris.



Learn More About Malyugin Ring 2.0 Today!

1-888-279-3323 | info@microsurgical.com

[f bit.ly/MSTfacebook](https://www.facebook.com/MSTfacebook) [t @MST_eye](https://twitter.com/MST_eye)

www.microsurgical.com