

AMNIOGRAFT®-G for Covering Glaucoma Drainage (Shunt) Tube

New thicker cryopreserved amniotic membrane graft specifically for covering glaucoma drainage tubes

AMNIOGRAFT®-G

Specifically prepared for covering a wide variety of glaucoma drainage implant/valve tubes:

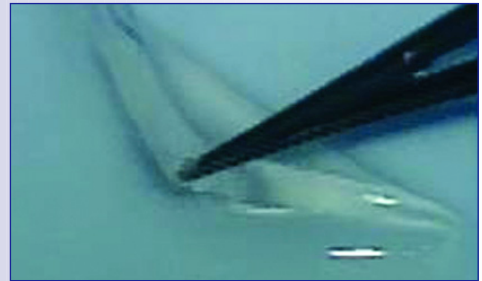
- Provides strong tectonic support
- Exerts anti-inflammatory & anti-scarring actions
- Prevents progressive thinning by encouraging host conjunctival cells to integrate into the AMNIOGRAFT®-G

Additional Features:

- Uniform and consistent thickness of 300 – 600 µm
- Biologically & mechanically stable
- Easy to suture and handle
- Translucent and allows for future suture lysis

Surgical Technique:

1. Cover the exposed part of the tube with single or folded AMNIOGRAFT®-G (Bio-Tissue, Inc., Miami, FL)
2. Secure AMNIOGRAFT®-G with four interrupted sutures at each corner with 8-O Vicryl sutures (or 10-O nylon sutures depending on surgeon preference).
3. Close the conjunctiva over the graft with 8-0 vicryl suture
4. If there is conjunctival shortage or button hole, apply another piece of AMNIOGRAFT® (Catalog # AG-2015 - F thickness) to cover the scleral defect with fibrin glue.



AMNIOGRAFT®-G

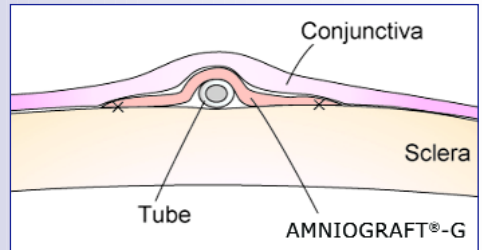
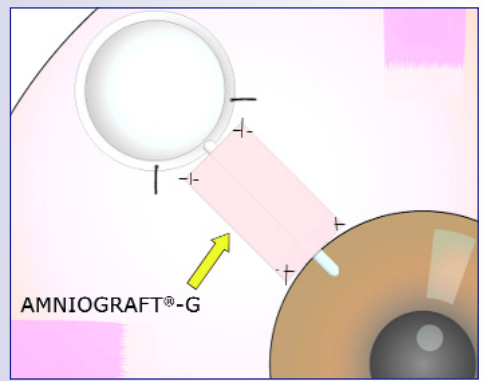


Illustration of AMNIOGRAFT®-G placed over tube.

How to Order

Cryopreserved amniotic membrane: AMNIOGRAFT®-G is processed and distributed by Bio-Tissue, Inc. (Toll Free 1-888-296-8858).

Catalog #	Description
AG-1510-G	AMNIOGRAFT®-G 1.5 x 1.0 cm – G thickness

The Ocular Surface Research & Education Foundation (OSREF)

Visit www.osref.org to view the Ocular Research & Education Foundation's full library of medical education material

For additional clinical information, contact Scheffer C.G. Tseng, M.D., Ph.D. by phone at 305-274-1299 or by e-mail at stsend@ocularsurface.com.

© 2008 OSREF